

Vacuum/pressure switch with display

VS-V-D-PNP M8-4

Part no.:10.06.02.00049

<https://www.schmalz.com/10.06.02.00049>

Homepage > Vacuum Technology for Automation > Vacuum Components > Switches and System Monitoring > Electronic Vacuum and Pressure Switches > Vacuum and Pressure Switches VS-V/P-D > VS-V-D-PNP M8-4

Vacuum/pressure switch with display and two digital output signals



Measuring range: -1.0 ... 0.0 bar

Shape: With digital display

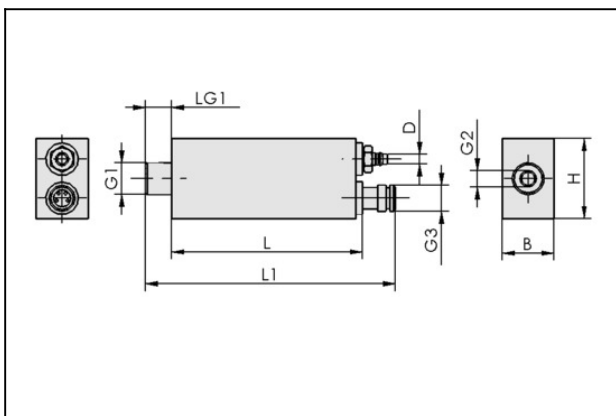
Type: Switches to plus

Electrical connection:

Male connect M8, 4 pole

Inputs/outputs: 2 digital

Design Data



Attribute	Value
B	16 mm
G1	G1/8"-M
G2	M5-F
G3	M8x1-M
H	24.7 mm
L	58.5 mm
L1	75.5 mm
LG1	8 mm

Technical Data

Contact to Schmalz

J. Schmalz GmbH | Johannes-Schmalz-Straße, 72293 Glatten, Deutschland | +49 7443 2403-102 | customercenter@schmalz.de

Vacuum/pressure switch with display

VS-V-D-PNP M8-4

Part no.:10.06.02.00049

<https://www.schmalz.com/10.06.02.00049>

Attribute	Value
Construction shape vacuum switch	Switches to +
Inputs/outputs	2 digital
Measured medium	Non-aggressive gases; dry, oil-free air
Measuring range	-1,0 ... 0,0 bar
Overpressure resistance	5 bar
Repeatability	± 1% of measuring range
Hysteresis	Adjustable: 0 to 100% of set value or comparator mode
Switching capacity (max)	180 mA
Indication	2xLED
Display resolution	0,01 bar, 5 mmHg, 0,2 inHg, 1 kPa
Display units	bar, mmHg, inHg, kPa
Measured-value display	3-digit 7-segment LED
Electrical connection	Male connect M8, 4 pole
Voltage	10.8-30V DC
Current consumption	30 mA
Protection type IP	IP 40/65 (with hose)
Temperature influence	± 3% of measuring range from 0 to 50°C
Operating temperature	0 ... 50 °C
Weight	25 g

Accessories

Contact to Schmalz

J. Schmalz GmbH | Johannes-Schmalz-Straße, 72293 Glatten, Deutschland | +49 7443 2403-102 | customercenter@schmalz.de

Vacuum/pressure switch with display

VS-V-D-PNP M8-4

Part no.:10.06.02.00049

<https://www.schmalz.com/10.06.02.00049>



ASK B-M8-4 5000 K-4P

Part no.10.06.02.00031

Connection cable

Interface Connection 1:

Fem connect M8, 4 pol

Cable length: 5000 mm

Interface Connection 2: Cable 4

Material: PUR-Cable



ASK WB-M8-4 5000 K-4P

Part no.10.06.02.00032

Connection cable

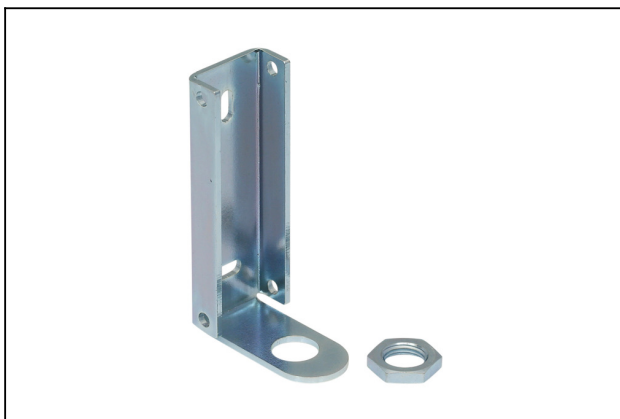
Interface Connection 1:

Elbow fem con M8, 4 pol

Cable length: 5000 mm

Interface Connection 2: Cable 4

Material: PUR-Cable



BEF-WIN 21x22x60.5 1.5 VS

Part no.10.06.02.00061

Mounting bracket

Width B: 21 mm

Height H: 22 mm

Length L: 60.5 mm

Wall thickness s: 1.5 mm

for: Vacuum switch

Vacuum/pressure switch with display

VS-V-D-PNP M8-4

Part no.:10.06.02.00049

<https://www.schmalz.com/10.06.02.00049>



VSi V D M8-4

Part no.10.06.02.00577

Vacuum and pressure switch with two digital output signals and IO-Link function

Measuring range: -1...0 bar

Type: with display

Electrical connection:

Male connect M8, 4 pole

Indication: 2xLED

Protection: IP 65