

Motore MP66

Motor MP66

IP54

IP54

0.7-2.1Nm

Servomotori C.C. a norme CEI ed IEC
D.C. servomotors CEI and IEC standards

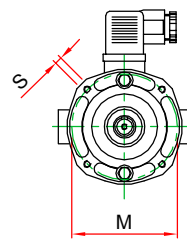
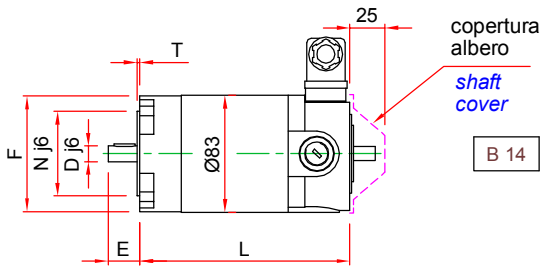
2 poli - magnete permanente
2 poles - permanent magnet

Grado di protezione IP54
Degree of protection IP54

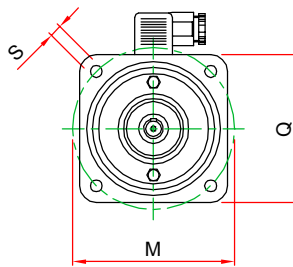
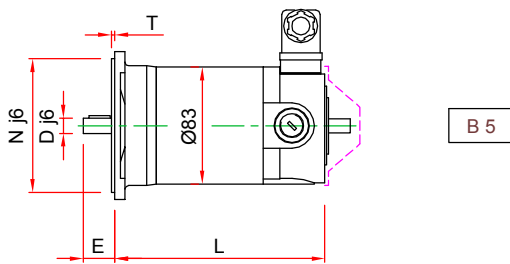
Isolamento classe F e H
Insulation F and H class

Connettore, cavo o morsetteria
Connector, cable or terminal box

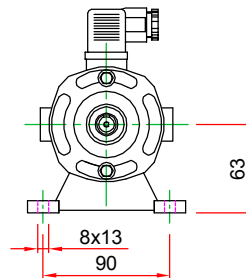
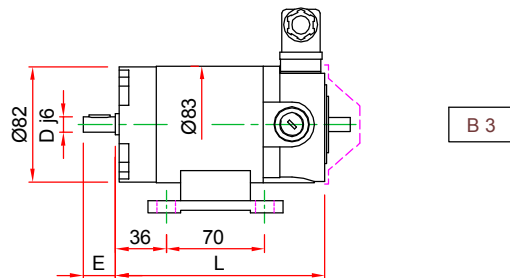
Assemblaggio accessori vedi pag.23
Accessories assembly see pag.23



Flange B14 / Flanges B14					
IEC	F	N	M	T	S
56 B14	Ø80	Ø50	Ø65	2	M5
63 B14	Ø90	Ø60	Ø75	2	M5
71 B14	Ø105	Ø70	Ø85	2	M6

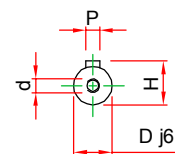
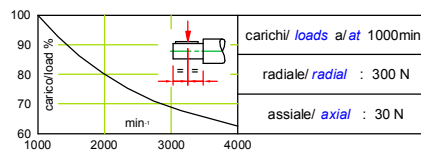


Flange B5 / Flanges B5					
IEC	Q	N	M	T	S
63 B5	105	Ø95	Ø115	2.5	Ø9
71 B5	120	Ø110	Ø130	2.5	Ø9



Alberi / Shafts				
D	E	P	H	d
Ø9	20	3x3x12	10.2	M3
Ø11	23	4x4x15	12.5	M4
Ø14	30	5x5x20	16	M5

Tipo / Type	L	Peso / Weight
MP66S	150	2.7 Kg.
MP66M	197	4.2 Kg.
MP66L	242	5.5 Kg.



Connettore / Connector	Uscita cavo / Free cable	Morsetteria / Terminal box