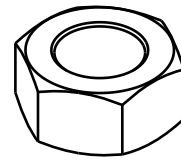
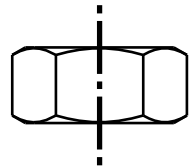
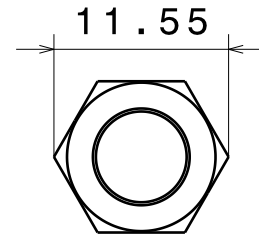
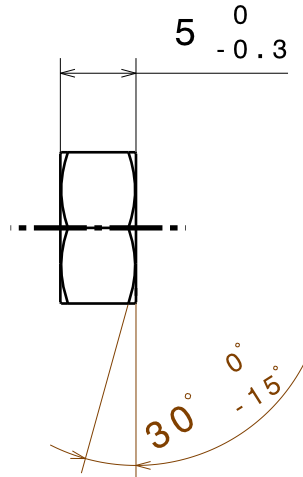
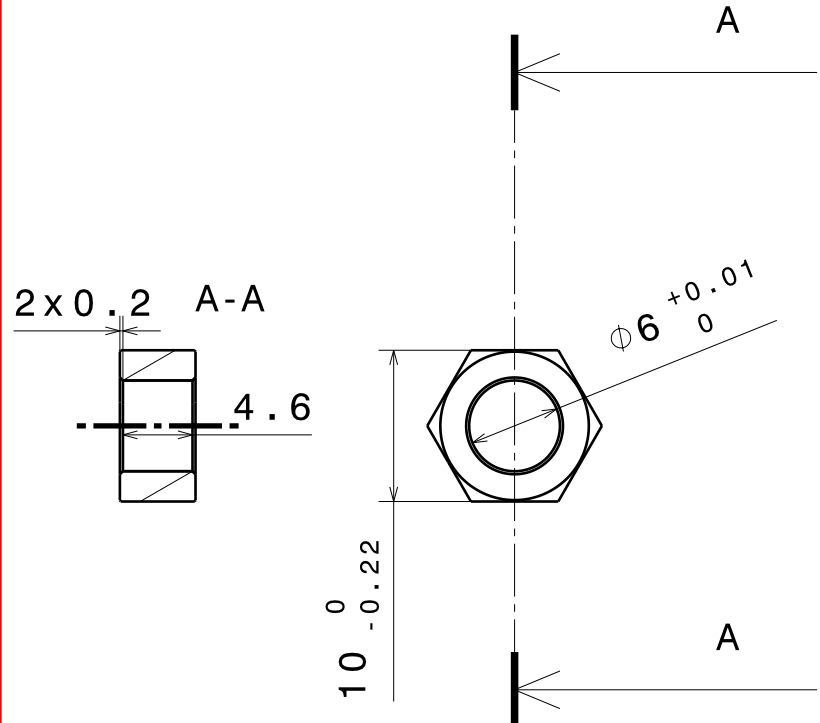


M
L
K
J
I
H
G
F
E
D
C
B
A



Isometric view



**Nota: Tuerca Hexagonal M6x1
counterclockwise,
Material A4-70, Rosca completa 5mm**

Todos los KPC's deben demostrar capacidad de proceso estadisticamente, control estadistico de proceso (CEP) con Cpk>1.67
All KPC's must demonstrate process capability with statistical process control (SPC) outputing Cpk > 1.67

Date	No	Zone	Revision	Auth'y

Geometric tolerance specification unless otherwise specified. Perfect form required for features-of size at MMC. True position tolerances and related datums, apply RFS. Separate true position callouts may be gaged separately, regardless of datum reference, see AT standars and applicable divisional standars, for interpretation.

Geometric drawing symbols

	Flatness		Parallelism
	Straightness		Profile of a surface
	Circularity		Diameter
	Cylindricity		True position
	Profile of a line		Concentric
	Maximum material condition (MMC)		Symmetrical
	Regardless of feature size (RFS)		Circular runout
	Angularity		Projected tolerance zone
	Perpendicularity		Basic Dimension



Tolerance unless otherwise specified don't measure direct on drawing

>400 ≤ 1000	± 1
>120 ≤ 400	± 0.6
> 30 ≤ 120	± 0.3
> 6 ≤ 30	± 0.2
≤ 6	± 0.1
Angle	± 1°

DATE	SCALE	METRIC	CATIA V5
27/12/17	SIN	mm	
DRAWN	IVAN ROJAS		
CHECKED	R. López		
APPR.	Jorge Gorocica		
FIRST USE	2 0 1 7		
REFERENCE	Fan and Coil		
MATERIAL	Ver Notas		
NAME	Tuerca M6x1		
PART NUMBER	DRAFT		

(CI) Inspection charac.	TOTAL	0
(KPC) Key product charac.	TOTAL	0

17 16 15 14 13 12 11 10 9 8 7 6 5 4 3 2 1